

### Brief Description

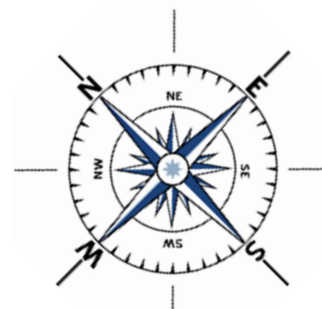
The total built area is 59,34 m<sup>2</sup> (Area for DPH: 52,96 m<sup>2</sup>), distributed in:

- Hall
- Master bedroom
- Bathroom
- Living-dining room
- Kitchenette
- Winter garden

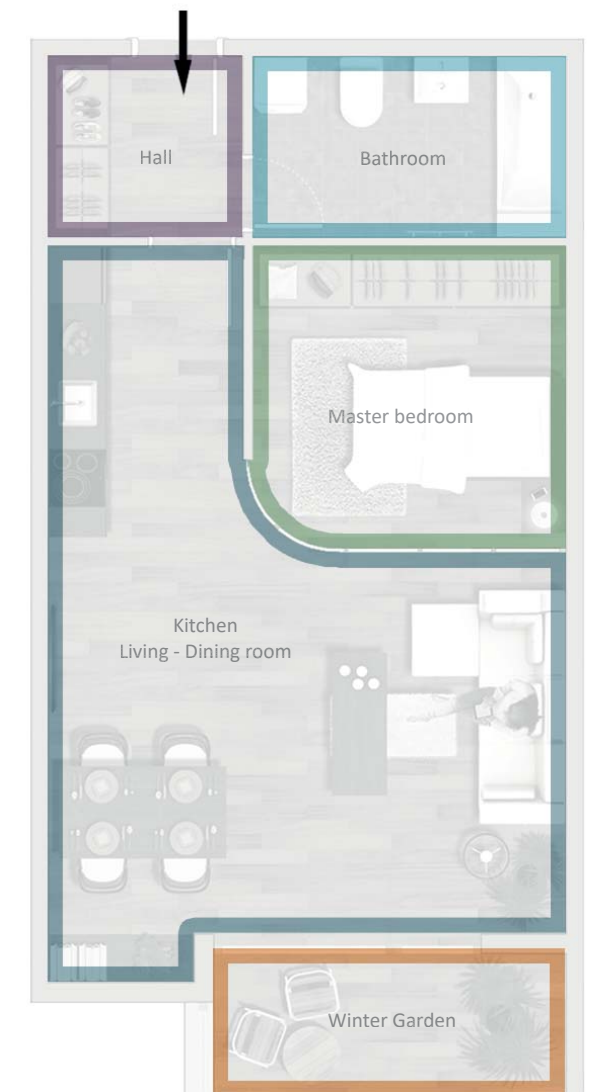
The separation between bedroom and living room is not permanent, giving the possibility of placing movable panels that allow the total opening of the space. With this proposal we can make the most of this apartment.

\* The drawings are just a virtual visualization of how the flats can be finished.

\* It is just included the floor and wall finishes, windows and doors, equipment of the bathrooms,



TOTAL BUILT AREA: 59,34 M<sup>2</sup>



It is included one storage-room of at least 2 square metres.

The store-rooms are located in the ground floor and in the underground floors.

