



Brief Description

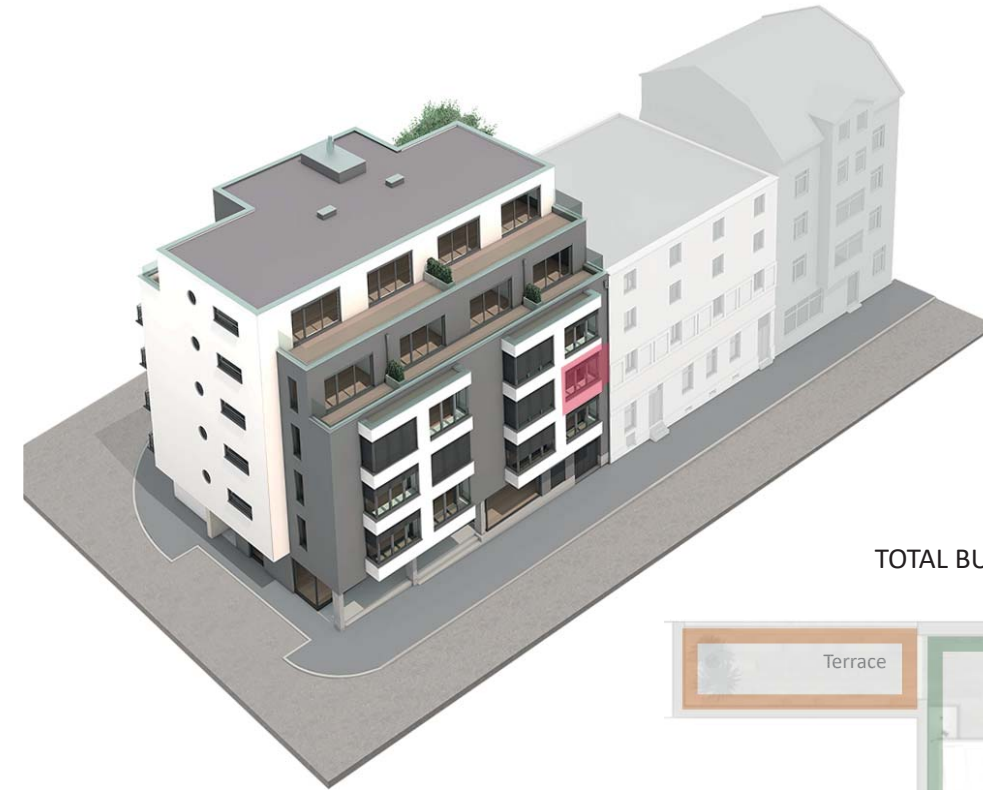
The total built area is 135,05 m² (Area for DPH: 107,78 m²), distributed in:

- Hall
- 2 bedrooms
- 2 bathrooms
- Laundry room
- Living-dining room
- Kitchenette
- Winter garden
- 2 terraces

With a southeast orientation of the common areas and a northwest orientation of the most private rooms, we have a perfect lighting and ventilation maintaining the privacy in the sleeping areas.

* The drawings are just a virtual visualization of how the flats can be finished.

* It is just included the equipment of the bathroom, the floor and wall finishes, windows and doors.



TOTAL BUILT AREA: 135,05 M²

It is included one storage-room of at least 2 square metres.

The store-rooms are located in the ground floor and in the underground floors.

